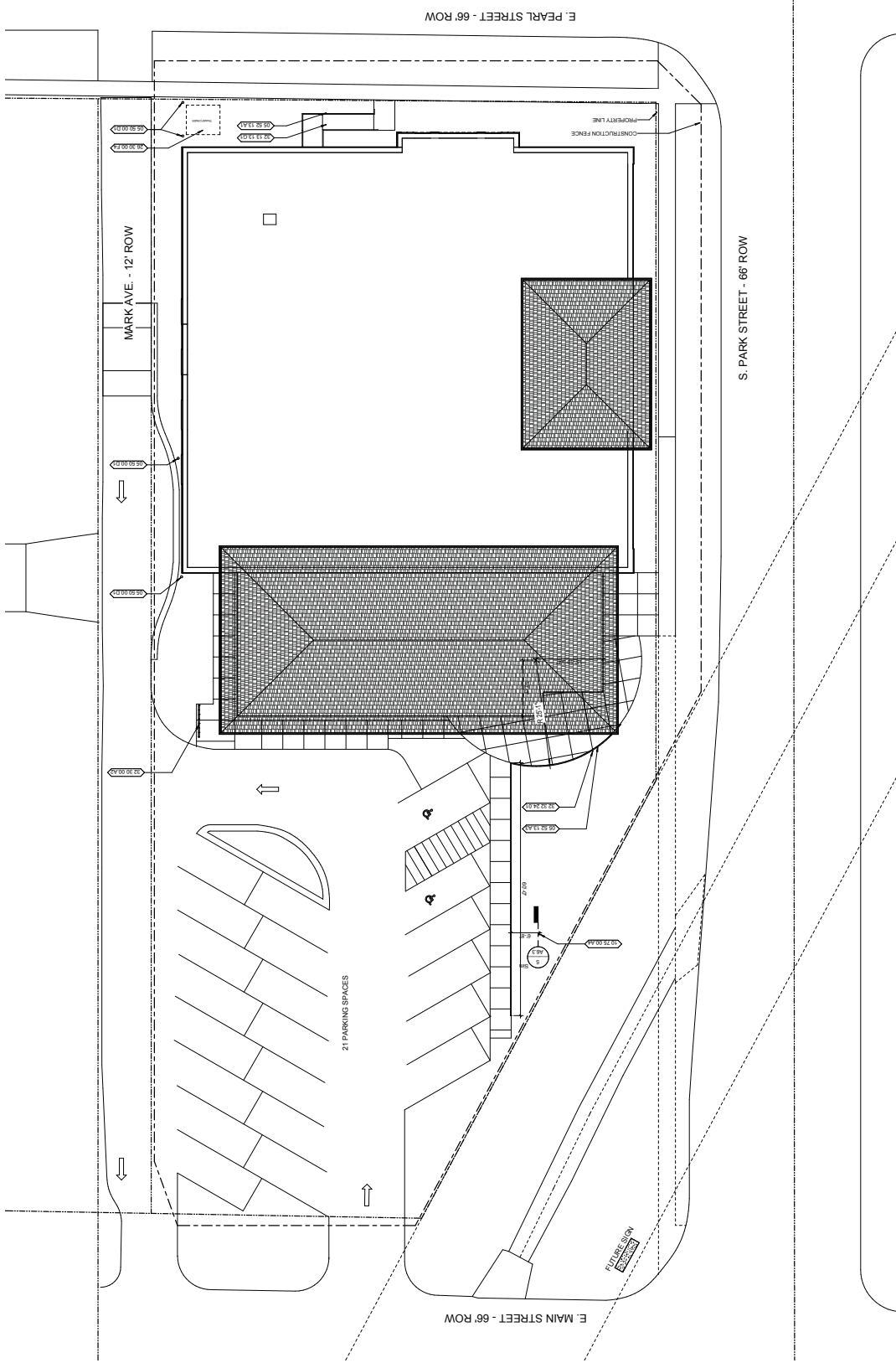


- KEYNOTES**
- 05300011 1" W/D REBAR PRE-HANGING
 - 05300012 1" W/D REBAR PRE-HANGING
 - 05300013 1" W/D REBAR PRE-HANGING
 - 05300014 1" W/D REBAR PRE-HANGING
 - 05300015 1" W/D REBAR PRE-HANGING
 - 05300016 1" W/D REBAR PRE-HANGING
 - 05300017 1" W/D REBAR PRE-HANGING
 - 05300018 1" W/D REBAR PRE-HANGING
 - 05300019 1" W/D REBAR PRE-HANGING
 - 05300020 1" W/D REBAR PRE-HANGING
 - 05300021 1" W/D REBAR PRE-HANGING
 - 05300022 1" W/D REBAR PRE-HANGING
 - 05300023 1" W/D REBAR PRE-HANGING
 - 05300024 1" W/D REBAR PRE-HANGING
 - 05300025 1" W/D REBAR PRE-HANGING
 - 05300026 1" W/D REBAR PRE-HANGING
 - 05300027 1" W/D REBAR PRE-HANGING
 - 05300028 1" W/D REBAR PRE-HANGING
 - 05300029 1" W/D REBAR PRE-HANGING
 - 05300030 1" W/D REBAR PRE-HANGING
 - 05300031 1" W/D REBAR PRE-HANGING
 - 05300032 1" W/D REBAR PRE-HANGING
 - 05300033 1" W/D REBAR PRE-HANGING
 - 05300034 1" W/D REBAR PRE-HANGING
 - 05300035 1" W/D REBAR PRE-HANGING
 - 05300036 1" W/D REBAR PRE-HANGING
 - 05300037 1" W/D REBAR PRE-HANGING
 - 05300038 1" W/D REBAR PRE-HANGING
 - 05300039 1" W/D REBAR PRE-HANGING
 - 05300040 1" W/D REBAR PRE-HANGING
 - 05300041 1" W/D REBAR PRE-HANGING
 - 05300042 1" W/D REBAR PRE-HANGING
 - 05300043 1" W/D REBAR PRE-HANGING
 - 05300044 1" W/D REBAR PRE-HANGING
 - 05300045 1" W/D REBAR PRE-HANGING
 - 05300046 1" W/D REBAR PRE-HANGING
 - 05300047 1" W/D REBAR PRE-HANGING
 - 05300048 1" W/D REBAR PRE-HANGING
 - 05300049 1" W/D REBAR PRE-HANGING
 - 05300050 1" W/D REBAR PRE-HANGING
 - 05300051 1" W/D REBAR PRE-HANGING
 - 05300052 1" W/D REBAR PRE-HANGING
 - 05300053 1" W/D REBAR PRE-HANGING
 - 05300054 1" W/D REBAR PRE-HANGING
 - 05300055 1" W/D REBAR PRE-HANGING
 - 05300056 1" W/D REBAR PRE-HANGING
 - 05300057 1" W/D REBAR PRE-HANGING
 - 05300058 1" W/D REBAR PRE-HANGING
 - 05300059 1" W/D REBAR PRE-HANGING
 - 05300060 1" W/D REBAR PRE-HANGING
 - 05300061 1" W/D REBAR PRE-HANGING
 - 05300062 1" W/D REBAR PRE-HANGING
 - 05300063 1" W/D REBAR PRE-HANGING
 - 05300064 1" W/D REBAR PRE-HANGING
 - 05300065 1" W/D REBAR PRE-HANGING
 - 05300066 1" W/D REBAR PRE-HANGING
 - 05300067 1" W/D REBAR PRE-HANGING
 - 05300068 1" W/D REBAR PRE-HANGING
 - 05300069 1" W/D REBAR PRE-HANGING
 - 05300070 1" W/D REBAR PRE-HANGING
 - 05300071 1" W/D REBAR PRE-HANGING
 - 05300072 1" W/D REBAR PRE-HANGING
 - 05300073 1" W/D REBAR PRE-HANGING
 - 05300074 1" W/D REBAR PRE-HANGING
 - 05300075 1" W/D REBAR PRE-HANGING
 - 05300076 1" W/D REBAR PRE-HANGING
 - 05300077 1" W/D REBAR PRE-HANGING
 - 05300078 1" W/D REBAR PRE-HANGING
 - 05300079 1" W/D REBAR PRE-HANGING
 - 05300080 1" W/D REBAR PRE-HANGING
 - 05300081 1" W/D REBAR PRE-HANGING
 - 05300082 1" W/D REBAR PRE-HANGING
 - 05300083 1" W/D REBAR PRE-HANGING
 - 05300084 1" W/D REBAR PRE-HANGING
 - 05300085 1" W/D REBAR PRE-HANGING
 - 05300086 1" W/D REBAR PRE-HANGING
 - 05300087 1" W/D REBAR PRE-HANGING
 - 05300088 1" W/D REBAR PRE-HANGING
 - 05300089 1" W/D REBAR PRE-HANGING
 - 05300090 1" W/D REBAR PRE-HANGING
 - 05300091 1" W/D REBAR PRE-HANGING
 - 05300092 1" W/D REBAR PRE-HANGING
 - 05300093 1" W/D REBAR PRE-HANGING
 - 05300094 1" W/D REBAR PRE-HANGING
 - 05300095 1" W/D REBAR PRE-HANGING
 - 05300096 1" W/D REBAR PRE-HANGING
 - 05300097 1" W/D REBAR PRE-HANGING
 - 05300098 1" W/D REBAR PRE-HANGING
 - 05300099 1" W/D REBAR PRE-HANGING
 - 05300100 1" W/D REBAR PRE-HANGING



- SITE GENERAL NOTES**
1. CONSTRUCTION SHALL BE IN ACCORDANCE WITH ALL CITY ORDINANCES AND LOCAL ORDINANCES PRIOR TO BEGINNING WORK. REPORT ANY VIOLATIONS TO THE CITY ENGINEER IMMEDIATELY.
 2. UTILITIES SHALL BE LOCATED AND DEPTH DETERMINED PRIOR TO CONSTRUCTION.
 3. UTILITIES SHALL BE PROTECTED AND DEPTH MAINTAINED THROUGHOUT CONSTRUCTION.
 4. PROVIDE ALL CONSTRUCTION SAFETY PERSONNEL, EQUIPMENT, AND TEMPORARY FENCING TO PROTECT THE PUBLIC AND ADJACENT PROPERTIES FROM DAMAGE DUE TO SETTLE, EROSION, LANDSLIDES, AND OTHER HAZARDS.
 5. ALL DAMAGE TO EXISTING UTILITIES SHALL BE REPAIRED TO ORIGINAL OR BETTER CONDITION AND SHALL BE APPROVED BY THE ARCHITECT PRIOR TO PROCEEDING WITH CONSTRUCTION.
 6. DAMAGE TO EXISTING UTILITIES SHALL BE REPAIRED TO ORIGINAL OR BETTER CONDITION AND SHALL BE APPROVED BY THE ARCHITECT PRIOR TO PROCEEDING WITH CONSTRUCTION.
 7. FINAL LOCATIONS OF ALL EXTERIOR MECHANICAL AND ELECTRICAL EQUIPMENT SHALL BE APPROVED BY THE ARCHITECT PRIOR TO CONSTRUCTION.
 8. REFER TO ALL MECHANICAL AND ELECTRICAL DRAWINGS FOR ANY ADDITIONAL STEEL PIPE DETAILS REQUIRED.
 9. REFER TO ALL MECHANICAL AND ELECTRICAL DRAWINGS FOR ANY ADDITIONAL STEEL PIPE DETAILS REQUIRED.

1 SITE PLAN
 SCALE: 1" = 10' 0"

****SITE GENERAL NOTES**
 SCALE: 1/2" = 1' 0"